



maars | panorama

Create your environment



Create your environment

To combine ultimate transparency with flexibility. With this system Maars introduces the first full glass partition that combines maximum transparency with the flexibility of a real relocatable partition system. The Maars designers used our sixty years experience in relocatable partitioning systems to create a full glass partitioning that fulfills all requirements on stability, flexibility and sound isolation. A system that seamlessly connects to the existing range of Maars products. This system is fully compatible with the **maars** | string2 program and can also be combined with the **maars** | metaline and **maars** | string system. Aesthetically the system creates full transparency because there are no vertical profiles or visible connections between the glasses. It all comes back into its name **maars** | panorama.



Create your environment



The perfect interior is an exterior. All functions of the human body are influenced by the rhythm of day and night. Research has shown that we not only register daylight with our eyes, but the whole body is sensitive to the spectrum of light. Based on light our body creates substances that makes us sleepy and relaxed or active and awake. This is why our general feeling of well being is dependant on light. With the use of **maars** | panorama daylight penetrates to the very centre of your building.





Create your environment



What makes the maars | panorama unique:

- No visible glass connections
- Completely relocatable
- Fully interchangeable with the **maars | string2** and **maars | interiour** options
- All Maars door types can be integrated
- Available in single and double glazing
- Various types of 10 and 12 mm glazing can be chosen
- Very high sound isolation values
- Maximum simplicity with minimum components

Corners, glass and wall connections. The system gives you the option to choose between two solutions to connect the glass. With convex–concave glazing we create a joint without any other appliances or we can use the extremely thin and hardly visible glass tape to connect plat poly glass. No vertical profiles or silicon joints are required. For corners and wall connections the options of full glass or solid are available.

pano

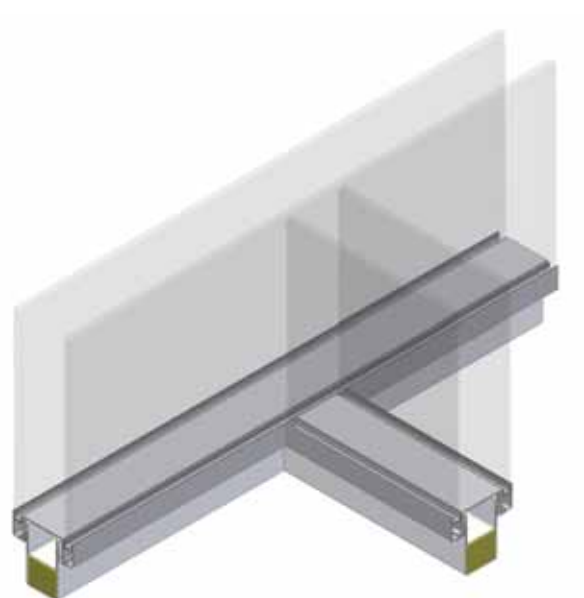
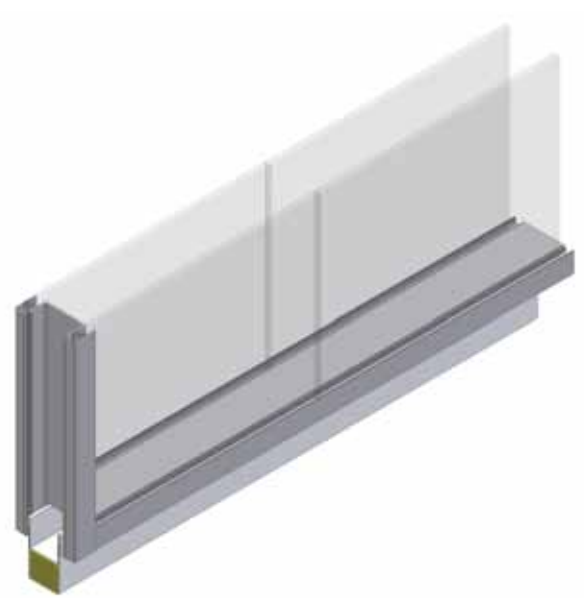
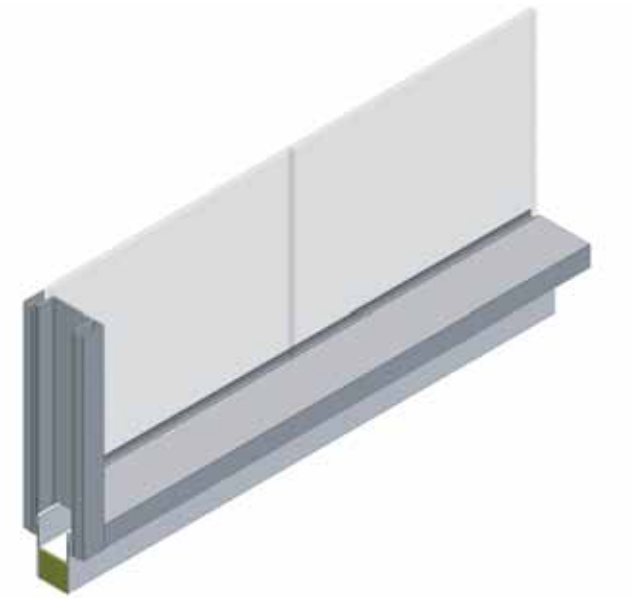
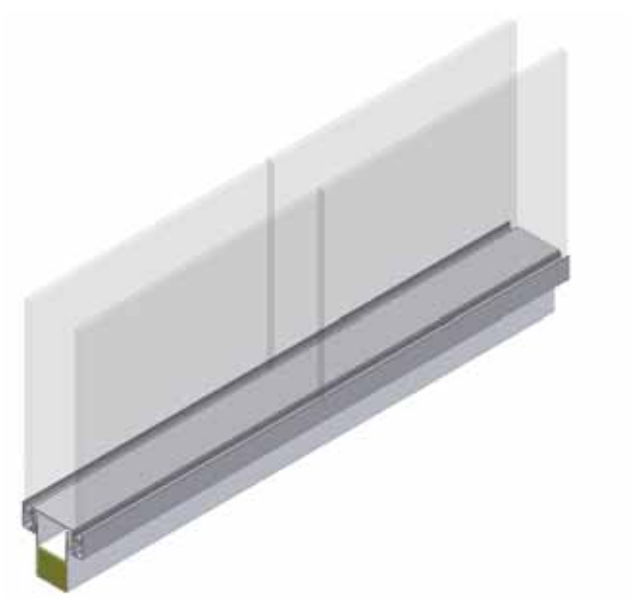
Create your environment

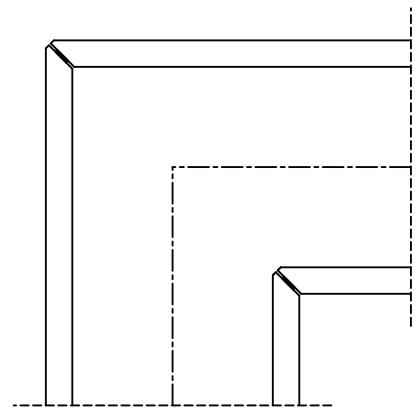
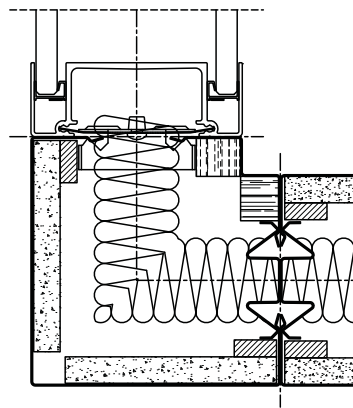
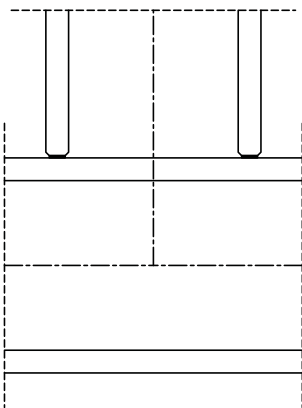
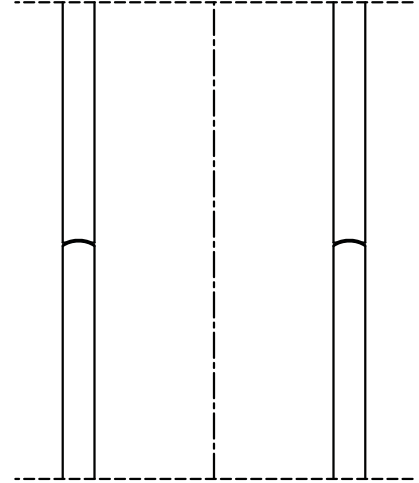
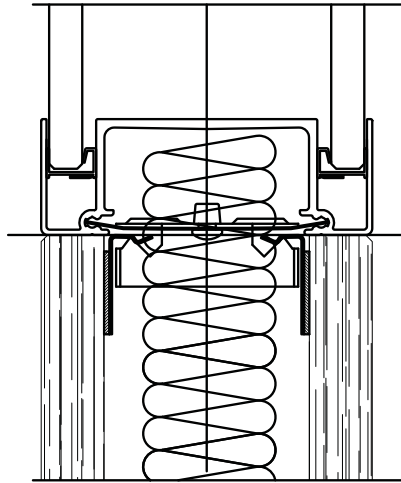
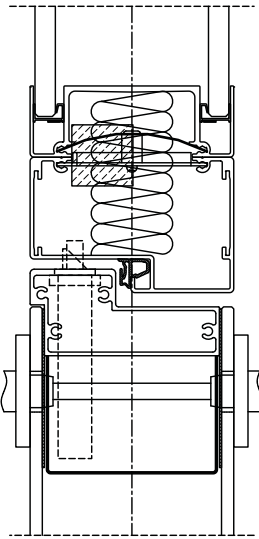
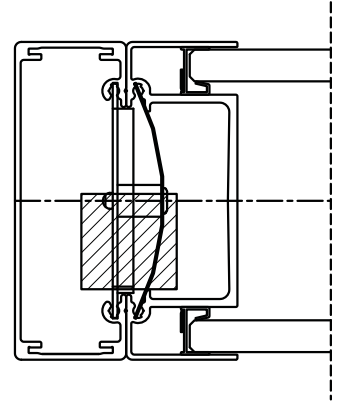
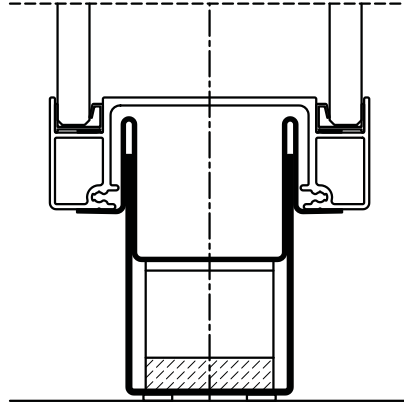
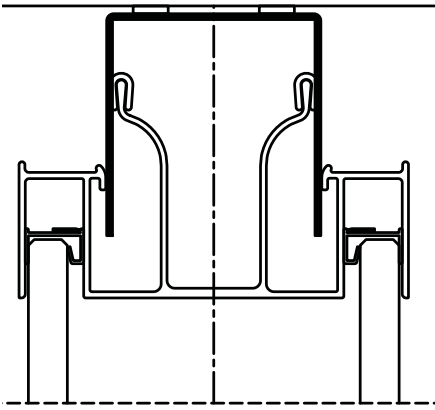


rama



Create your environment





panorama details



maars | panorama partitioning system

PARTITIONING THICKNESS 100 mm

CONSTRUCTION The partition is build using glazed panels in special surrounding profiles. Both single and double glass solutions are possible. Doorframes can be connected by using a clear click-system, creating a zero joint.

TRACKS Steel base and upper tracks are recessed floor and ceiling tracks.

GLAZING Toughened or laminated 10 or 12 mm glass. Vertical connection between the glasses is executed with special glass tape or convex-concave glazing. No vertical profile or silicon joints are required.

CORNER ELEMENTS Fully glazed corners without vertical profiles. A combination with solid corners is possible.

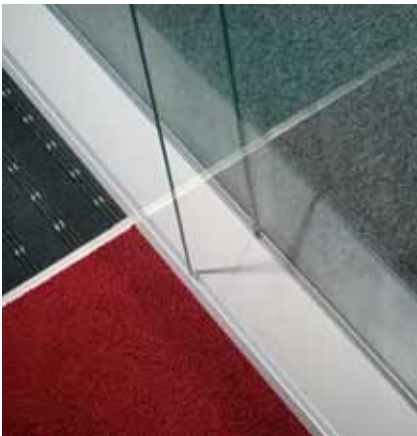
DOORS The full range of Maars doors is available in the system, such as toughened glass doors, 40 mm thick steel doors, XL glass and steel doors, aluminium framed doors and sliding doors.

DOOR FURNITURE Loose-joint hinges: 3 system-linked loose-joint hinges per doorframe in a chromium-nickel finish. Lock: Lips 2500/16/U20. Other types on request.

FINISH All visible metal components are finished using a high quality, environmentally friendly, powder-coating. Available in a choice of colours from the Maars Selection, in silk gloss or textured. Other RAL colours on request.

SOUND RATING Maars Panorama has a laboratory-measured sound insulation value of up to $R_w = 43\text{dB}$ in accordance with ISO717-1.

DESIGN POSSIBILITIES **maars** | panorama is interchangeable with **maars** | string2 partitions and can also be combined with **maars** | metaline and **maars** | string partitions. Also the **maars** | interiour options can be integrated.



Panorama is a registered trademark of Maars Holding BV. Product details may be subject to change.



Create your environment

+31(0)341 46 52 11
www.maarsgroup.com