

maars | string

Create your environment



Create your environment

Maars goes further. Looks further. Thinks further. And this results in partitioning systems that stand head and shoulders above the competition. Both in technical terms and also aesthetically.

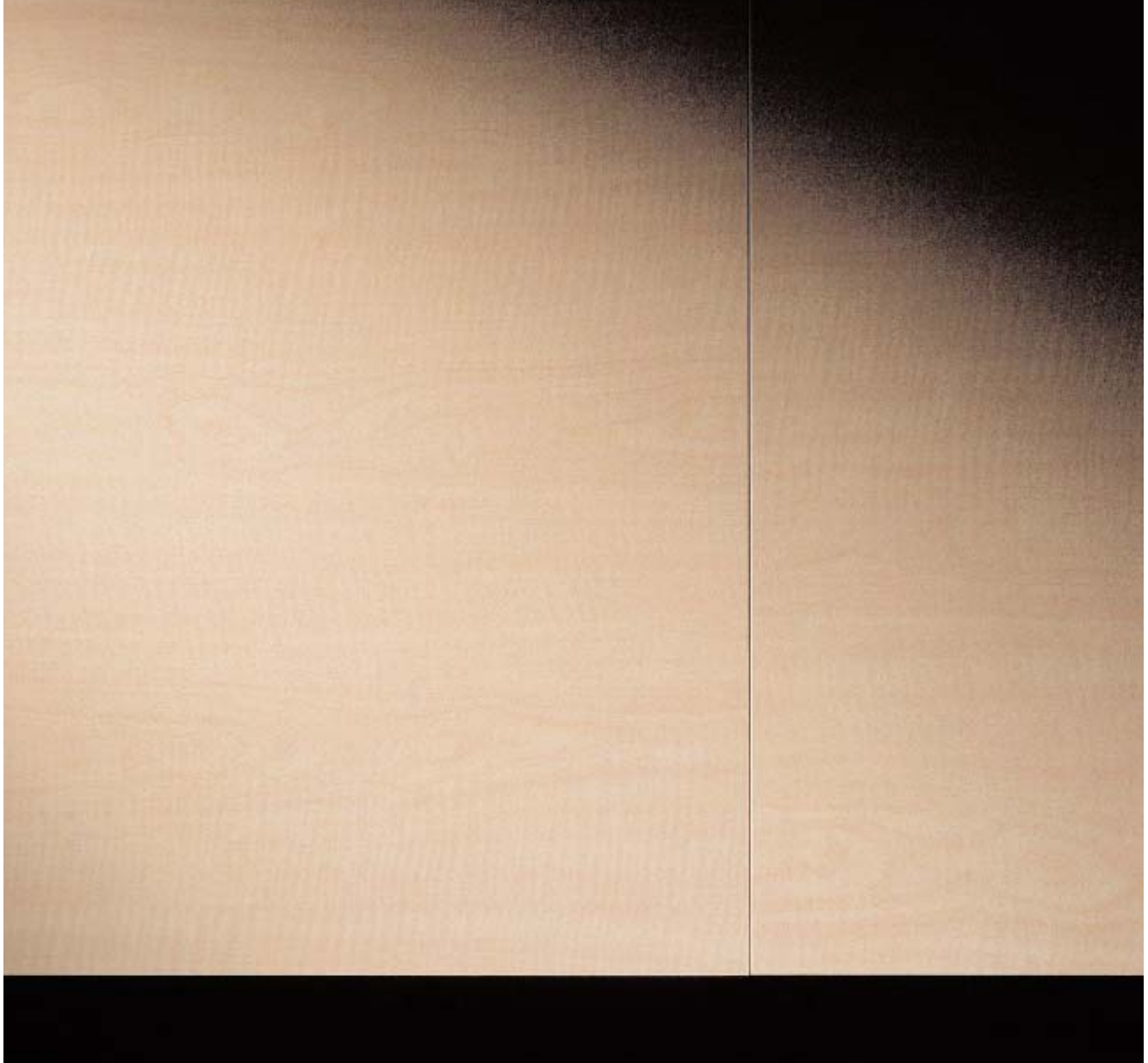
Maars provides a solution that effortlessly outdates existing systems. Through its many possibilities for application. Through its innovative use of materials. And also through the way in which all of these different materials can be combined into a solution that is both functional and pleasing to the eye. For 'pleasing to the eye', you could also read 'exciting'. Or even 'sexy'.

These are all very apt descriptions for the partitioning system that we would like to present to you in this brochure: Maars String.

Why a String? You might well ask yourself why we chose this name for a partitioning system. Until, that is, you get to know the system a little better and take a closer look at its exceptional design.

Then everything suddenly becomes clear. You see its beautifully moulded, thin contours. The refined, subtle lines of its design. You see how the maximum attractiveness has been achieved with the minimum of materials. You experience the seductive look and feel of the colours and materials. And discover the system's suppleness and surprising flexibility that allows it to fit into every plan or project. Maars String.





Glass. Steel. Wood. All of very high quality. These are the materials that you can choose from with the String partitioning system. And here, wood is a newcomer to the Maars range. But that's only the beginning, because there are very many different ways of combining the various materials. And every combination gives the space in which it is used an entirely different look, with a totally different atmosphere. If you just count all the different woods, fabrics and glasses and the many colours and patterns in which the String system is available, you'll see that the number of variations is just about endless. So there's sure to be something that matches your needs and taste.

Create your environment



H 1127



Create your environment



With the String, Maars offers you a tailor-made solution. Not just in the choice of colours and use of materials, but also when it comes to the layout possibilities and the ability of the system to adapt to future requirements. To put it briefly, String is a system that entirely matches your wishes.

At Maars, we make all of this possible through carefully considered construction and the many variations in size of the modules, panels and other elements and by the simple way the system can be built up, taken down, moved, modified and expanded just as you wish. and then modified again. Time after time.

string

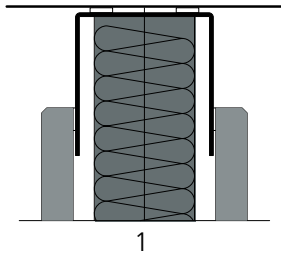


ng

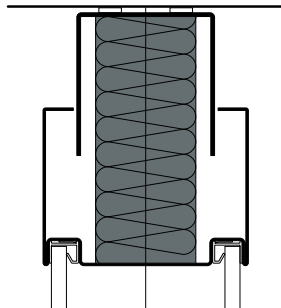


Create your environment

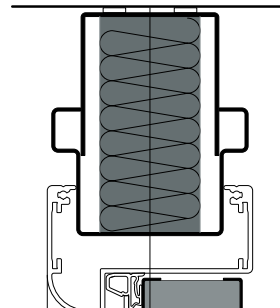




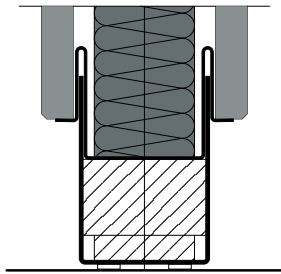
1



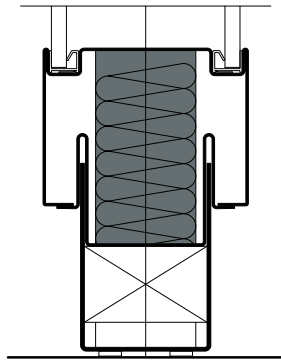
3



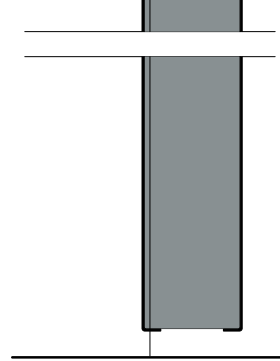
5



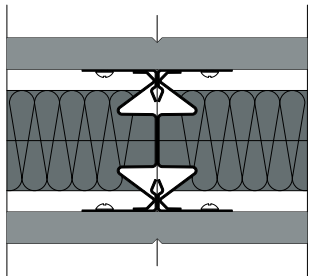
2



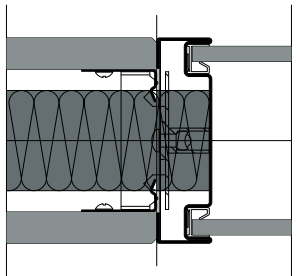
4



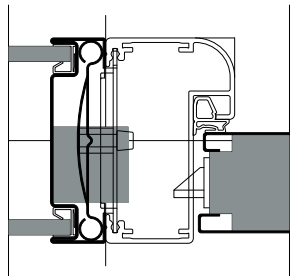
6



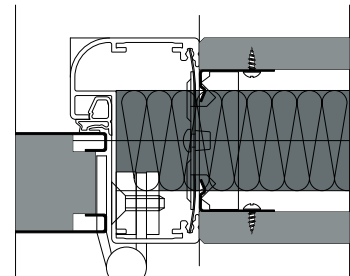
7



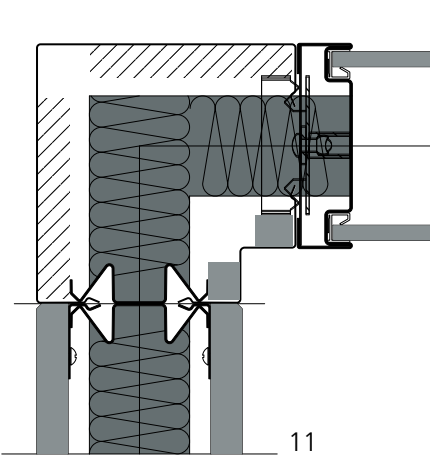
8



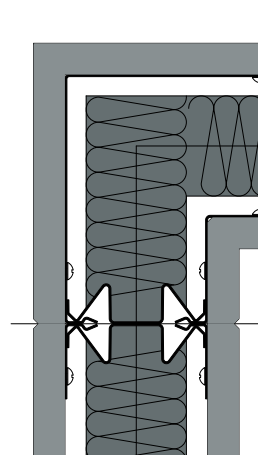
9



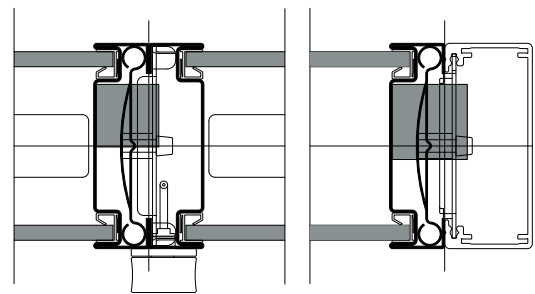
10



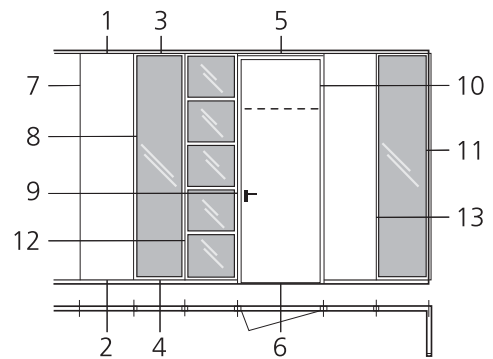
11



12



13





Specifications of **Maars String** partition wall

WALL THICKNESS 82 mm

CONSTRUCTION The walls are built using a steel construction of special vertical posts located between lower and upper profiles. The panels and frames are clipped to these posts using a click-and-fix system.

BASE/UPPER BOARDS Recessed steel base and upper boards.

WALL PANELS Melaminated or veneered 12 mm chipboard panels. The panels are clipped to the structure by means of a clip-strip. The panels are filled with rock wool to a thickness of 40 mm. Versions with 19 mm panels are possible.

MODULE LINKING By means of an O-ring joint or 5 mm joint between closed panels and window and door frames. These are clipped by means of a click-and-fix system where the panels and door frames and linked frames meet.

GLASS ELEMENTS Steel window frames, double-glazed with 4 mm glass on one side and 6 mm glass on the other.

DOOR FRAMES Aluminium door frames in straight, round or elliptical versions.

DOORS Steel, wall-height closed Maars doors, 40 mm thick. Standard widths are 880 and 930 mm. Other sizes are possible.

DOOR FINISH An MDF framework with a steel top layer on each side, enclosing a special filling.

DOOR FITTINGS Loose-joint hinges: 3 system-linked chromium-plated loose-joint hinges per door frame. Lock: Lips 2500/16/U20 series. A choice of fittings.

FINISH All visible wall components are given a powder coating using an environmentally friendly process in a choice of colours from the Maars RAL selection. Available in silk finish or textured. Other colours by arrangement.

SOUNDPROOFING In its closed version, this type of wall has a laboratory-measured airborne sound insulation index of up to 45 dB. We should like to point out that fitting door and window elements considerably reduces the sound insulation index.

FIRE-RESISTANCE In its closed version, this type of wall has been tested for fire-resistance and can withstand fire for a duration of at least 30 minutes.

We will be happy to discuss any special versions of the Maars String partition walls such as walls with different materials, special colours, sizes, finishes, etc. The Maars String system is so versatile that we are sure that we can almost always satisfy your wishes.



Maars String is a registered trade mark of Maars Holding BV. Product details may be subject to change.



Create your environment

+31(0)341 46 52 11
www.maarsgroup.com